



KUARIO



All rights reserved. No parts of this work may be reproduced in any form or by any means - graphic, electronic, or mechanical, including photocopying, recording, taping, or information storage and retrieval systems - without the written permission of the publisher.

Products that are referred to in this document may be either trademarks and/or registered trademarks of the respective owners. The publisher and the author make no claim to these trademarks.

While every precaution has been taken in the preparation of this document, the publisher and the author assume no responsibility for errors or omissions, or for damages resulting from the use of information contained in this document or from the use of programs and source code that may accompany it. In no event shall the publisher and the author be liable for any loss of profit or any other commercial damage caused or alleged to have been caused directly or indirectly by this document.

Versie 1.0.3 geproduceerd op: Febrero 2023 in Nieuw-Vennep.

Uitgever

inepro

Productie

inepro

Inhoudsopgave

Instalación de Ricoh a través de WIM

4

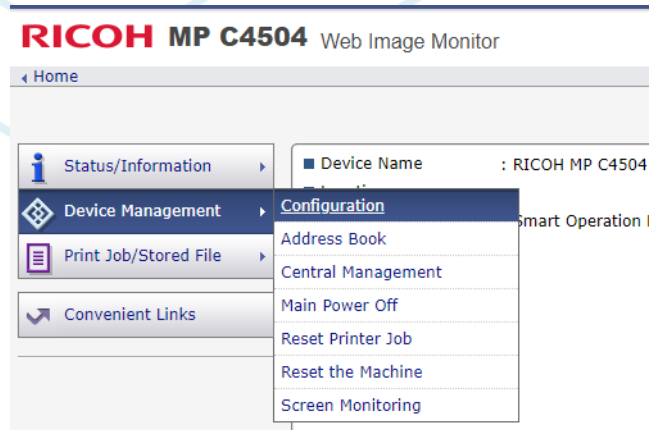


Instalación de Ricoh a través de WIM

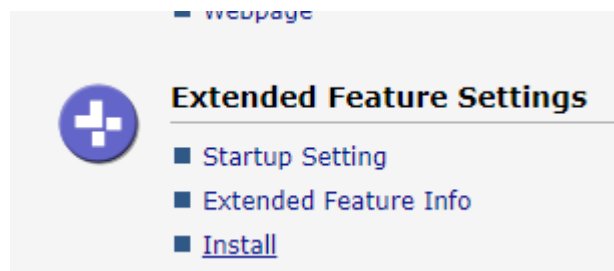
Instalación de Ricoh de KIOSK KUARIO MFP a través de WIM

Paso 1: Vaya a Web Image Monitor (WIM) de la impresora e inicie sesión como administrador.

Paso 2: Vaya a Device Management y haga clic en Configuration

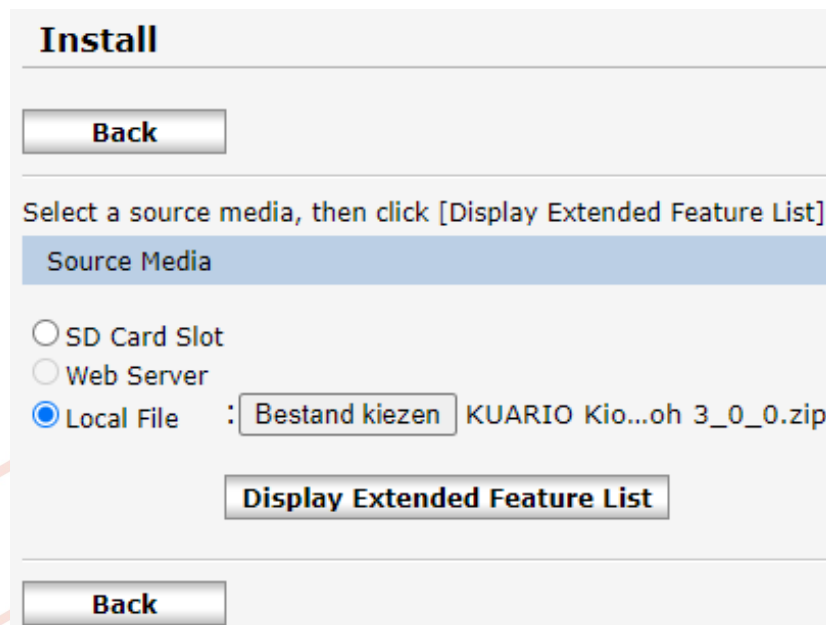


Paso 3: Vaya a Extended Feature Settings y haga clic en Install



Paso 4: Seleccione Local File y añada KUARIO MFP Kiosk como .zip.

Paso 5: Haga clic en Display Extended Feature List (parece que no pasa nada, pero a veces puede tardar bastante en cargar).



Paso 6: Cuando el paso 4 haya terminado de cargarse, aparecerá la siguiente pantalla. Haga clic en la viñeta KUARIO MFP Kiosk y haga clic en Instalar.

Install

Back

Select a source media, then click [Display Extended Feature List].

Source Media

SD Card Slot
 Web Server
 Local File : Bestand kiezen | Geen bestand gekozen

Display Extended Feature List

Installation Target Setting

■ Install to : Device HDD

Type-J Setting

■ Auto Start : On Off

Extended Feature List

↓ Install

1/1

Total Applications:1					
	Extended Feature Name	Type	Description	Version	Source Media
<input checked="" type="radio"/>	KUARIO Kiosk	SOP	KUARIO MFP Kiosk self-service app	3.0.0	Local File

Back

Paso 7: Confirme que desea instalar KUARIO MFP Kiosk haciendo click en OK.

Install

i Confirm

The following extended feature will be installed.

- Extended Feature Name : KUARIO Kiosk
- Description : KUARIO MFP Kiosk self-service app
- Version : 3.0.0
- Product ID : 1661403149
- Startup Location : ---
- Vendor : KUARIO
- Contact
- TEL : +31-252 744 044
- Fax : +31-252 744 044
- Email : info@kuario.com

OK **Cancel**

i Confirm

Installing the extended feature.

- KUARIO Kiosk

Paso 8: La pantalla volverá automáticamente a la pantalla de abajo.

Install

Back

Select a source media, then click [Display Extended Feature List].

Source Media

SD Card Slot
 Web Server
 Local File : Geen bestand gekozen

Display Extended Feature List

Installation Target Setting

■ Install to : ▼

Type-J Setting

■ Auto Start : On Off

Extended Feature List

Install

1/1

Total Applications:0

Extended Feature Name	Type	Description	Version	Source Media
-----------------------	------	-------------	---------	--------------

Back

La instalación se ha completado.

