



KUARIO



All rights reserved. No parts of this work may be reproduced in any form or by any means - graphic, electronic, or mechanical, including photocopying, recording, taping, or information storage and retrieval systems - without the written permission of the publisher.

Products that are referred to in this document may be either trademarks and/or registered trademarks of the respective owners. The publisher and the author make no claim to these trademarks.

While every precaution has been taken in the preparation of this document, the publisher and the author assume no responsibility for errors or omissions, or for damages resulting from the use of information contained in this document or from the use of programs and source code that may accompany it. In no event shall the publisher and the author be liable for any loss of profit or any other commercial damage caused or alleged to have been caused directly or indirectly by this document.

Versie 1.0.3 geproduceerd op: Feveireiro 2023 in Nieuw-Vennep.

Uitgever

inepro

Productie

inepro

Inhoudsopgave

Ricoh instalação via WIM

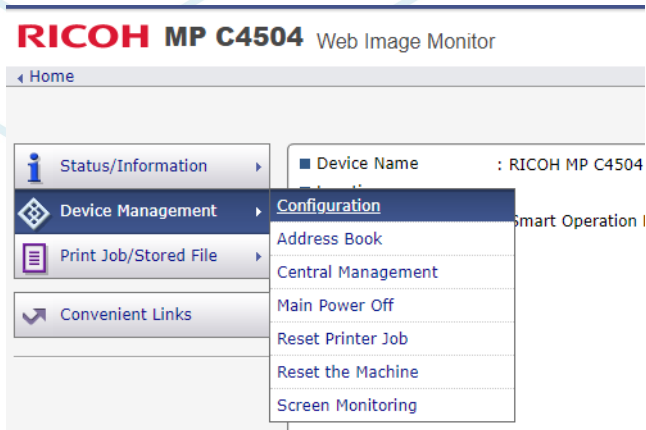


Ricoh instalação via WIM

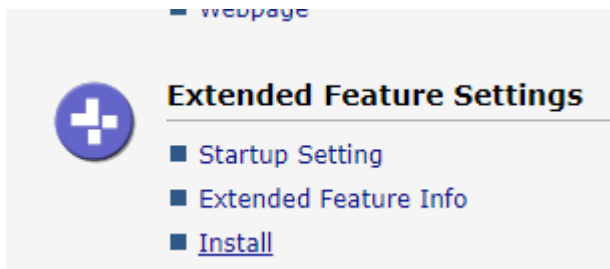
Ricoh instalação de KUARIO MFP KIOSK via WIM

Passo 1: Ir para o Monitor de Imagem Web da impressora (WIM) e iniciar sessão como Administrador

Passo 2: Ir para Gestão de Dispositivos e clicar em Configuração

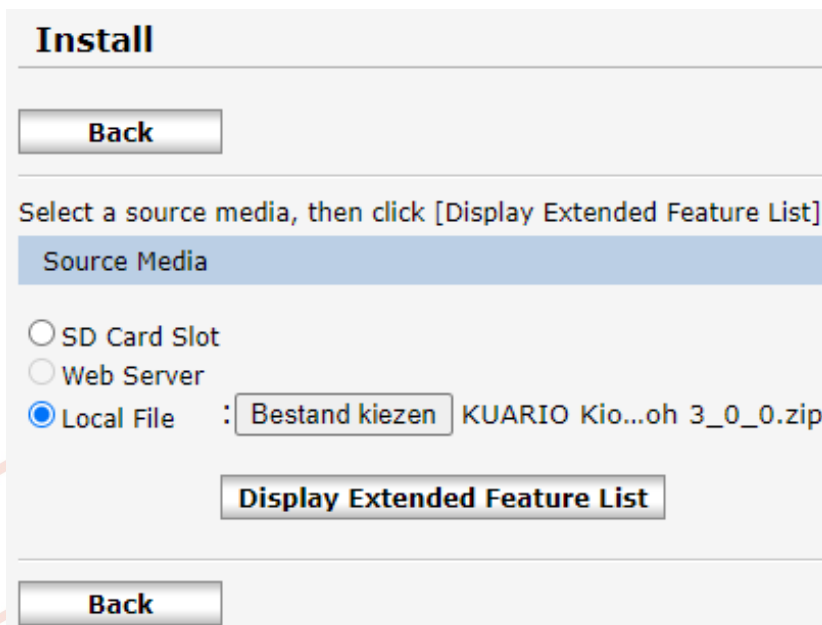


Passo 3: Vá para Definições de Funcionalidades Alargadas e clique em Instalar



Passo 4: Seleccionar ficheiro local e adicionar o quiosque KUARIO MFP como um zip.

Passo 5: Clique em Display Extended Feature List (parece que nada está a acontecer, mas por vezes pode demorar algum tempo a carregar).



Passo 6: Quando o passo 4 tiver terminado o carregamento, obtém-se o ecrã abaixo. Clique na bala do KUARIO MFP Kiosk e clique em Instalar.

Install

Back

Select a source media, then click [Display Extended Feature List].

Source Media

SD Card Slot
 Web Server
 Local File : Bestand kiezen | Geen bestand gekozen

Display Extended Feature List

Installation Target Setting

■ Install to : Device HDD

Type-J Setting

■ Auto Start : On Off

Extended Feature List

↓ Install

1/1

Total Applications:1					
	Extended Feature Name	Type	Description	Version	Source Media
<input checked="" type="radio"/>	KUARIO Kiosk	SOP	KUARIO MFP Kiosk self-service app	3.0.0	Local File

Back

Passo 7: Confirme que deseja instalar o KUARIO MFP Kiosk clicando em OK.

Install

i Confirm

The following extended feature will be installed.

- Extended Feature Name : KUARIO Kiosk
- Description : KUARIO MFP Kiosk self-service app
- Version : 3.0.0
- Product ID : 1661403149
- Startup Location : ---
- Vendor : KUARIO
- Contact
- TEL : +31-252 744 044
- Fax : +31-252 744 044
- Email : info@kuario.com

OK **Cancel**

i Confirm

Installing the extended feature.

- KUARIO Kiosk

Passo 8: O ecrã volta automaticamente para o ecrã abaixo.

Install

Back

Select a source media, then click [Display Extended Feature List].

Source Media

SD Card Slot
 Web Server
 Local File : Geen bestand gekozen

Display Extended Feature List

Installation Target Setting

■ Install to : ▾

Type-J Setting

■ Auto Start : On Off

Extended Feature List

Install

⏪ ⏩ 1/1 ⏴ ⏵

Total Applications:0

Extended Feature Name	Type	Description	Version	Source Media
-----------------------	------	-------------	---------	--------------

Back

A instalação está agora concluída.

